



# Youth-Led Creativity Funding

Some helpful guidance

## Part 1

### Information about the programme



This is the Easy Read  
version

# Who we are



We are **Esmée Fairbairn Foundation**. We are an organisation that gives out **funding**.

We give out funding to push for a better natural world and a fairer future. We also give out funding to make communities stronger across the UK.

**Fund or funding:** this means money that we give to organisations to support them with their programmes.



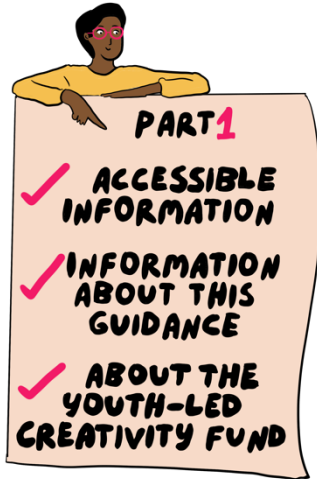
We have worked with Esmée's **Involving Young People Collective**.

**Involving Young People Collective:** this is a group of young people who are connected by their drive to push for social change. They work with us as consultants to improve how we work.



The Youth-led Creativity programme is part of Esmée's work to make sure there is a fairer future.

# About this document



This document is **Part 1** of 2.

It covers these sections:

- About this guidance
- Accessible information
- About the Youth-Led Creativity funding

Please go to **Part 2** when you have finished this part.

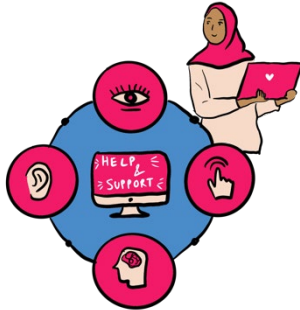


This guidance has information about our **Youth-Led Creativity** funding programme.

It talks about the aims of the programme and if your organisation can apply.

**Youth-Led:** this means work that is led by and for young people.

# Accessible information



You might need information in a format that is accessible to you. You can ask us for this if you want it.

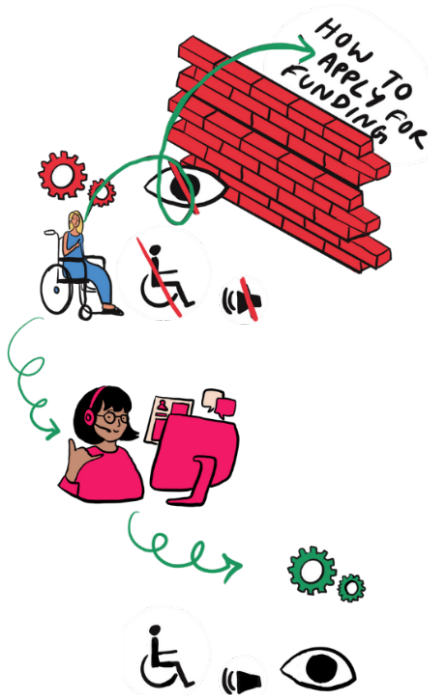


You can email us at this address:

[youthledcreativity@esmefairbairn.org.uk](mailto:youthledcreativity@esmefairbairn.org.uk)

Or, phone us on this number:

**020 7812 3700**



Part 2 of this guidance tells you how to apply for funding. Please tell us if any part of the application feels like a **barrier**.

We will do our best to support you to apply in a way that meets your needs.

**Barrier:** here, this means anything that makes it harder for you to apply for the funding.



We also have other support in place to make our application as accessible as possible.

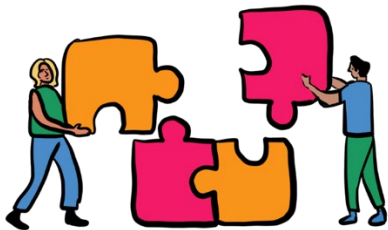
For example, an Access Payment. This is money that pays for support to apply.



You can read about our other support here:

[accessibility-related support](#)

## Aims of the programme



The Youth-Led Creativity programme builds on young people's power to make change.



The programme uses being creative to support young people to:

- Make their lives better
- Build up their careers
- Change the world around them

We are supporting work that is led by and for young people.



We are supporting young people who are not often represented in arts and culture.

**These people are not often represented in arts and culture:**

- Deaf people
- Disabled people
- **Neurodivergent** people



**Neurodivergent:** this means having a brain that works differently from the average person's brain.



- People from communities that face **inequity** because of their race



- People who are at a disadvantage because they don't have lots of money

**Inequity:** this means not having fair chances or not having access to justice.



- People who identify as **LGBT+**



**Lesbian, gay, bisexual or other minority sexual orientation, and/or minority gender:** this means people who don't meet traditional roles around sexuality and gender. They often face barriers because of who they are, and who they love.

### CARE EXPERIENCED

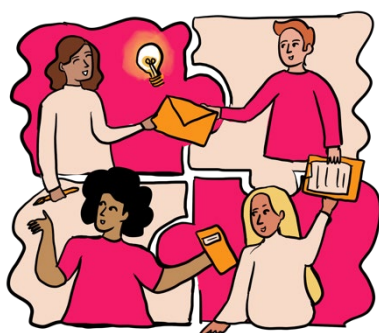


- People who have experienced being in care



- People who have experience of **migration**.

**Migration:** this means people who have come to the UK from another country. Often, this is to escape danger or to have a better quality of life.



The programme has been **co-designed**.

**Co-design:** here, this means working with young people to design programmes and make decisions that affect their lives.



We have worked with young **consultants** from Esmée's Involving Young People Collective.

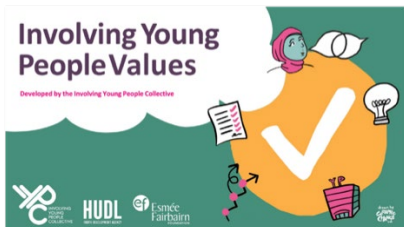


Young consultants will be on a **panel** with Esmée staff. They will play a big role in looking at your applications.

The panel helps make sure the views and voices of young people are a big part of the programme.

**Consultant:** a person who gives expert advice.

**Panel:** a group of people who make recommendations about funding.



We will also use our **values** when making decisions. Our Collective worked on these values. You can read them here:



[Involving Young People Values](#)

**Value:** this means an important belief or standard.



# About the funding

We will give out **£1 million** in 2024.  
We will think about funding:



- Project costs
- Core costs
- **Grants** for 1 to 3 years

**Grant:** this means an amount of money that we give to an organisation, to support them to carry out a programme.



The most money you can apply for is **£120 thousand**.



We expect to give out **8 to 12** grants.



A Learning Programme will run alongside the funding. This will be co-designed by funded organisations.

**A Learning Partner** will help to run the programme.

**Learning Partner:** this is a person who supports an organisation or group of organisations to learn.



The Learning Programme will make **peer support** and learning possible.

**Peer support:** this means when people use their own experiences to support each other.



Organisations will be paid to support them to take part in the Learning Programme.



The Learning Programme will help funded organisations to work on and share their **models of practice**.

**Model of practice:** this is how an organisation delivers their work.



We will review the learning from this fund. We will do this together, with the:

- Funded organisations, and
- Involving Young People Collective

This will help us to decide how we best support work. It will help us reach this outcome in the future.

# The criteria

**Criteria:** this means who and what the funding is for

**We want to support organisations and work that:**



- **Are driven and shaped by young people.** This is so young people can build their confidence and skills.

Organisations must show that they mostly work with young people who are:

- Aged 14 to 30
- Are not often represented in arts and culture

They must have a **track-record** of making sure these people are at the centre of their work.

**Track-record:** this means the things your organisation has done in the past.



## We want to support:

- Organisations that put the joy and care of young people first.



- Organisations that use art and being creative as a tool for young people to use their voice.

- Organisations that use it as a tool for young people to change their own lives and the world around them.



- Organisations that are driving change for the future by doing something new.

Or, by doing something using a way of working that has been tried and tested before. They are using these ways of working to push things forward.

# Exclusions

**Exclusions:** this means who or what can't be funded.



## We can't fund these organisations:

- Organisations that can't show that they have strong youth leadership.

Or, organisations that have not started to become youth-led yet.

- Work that is part of the **school curriculum**.

**School curriculum:** this means a list of everything that must be taught in schools across the UK.



## We also can't fund:

- Organisations that don't have at least three **trustees** or directors (most of the directors should not be paid **executives**).

**Trustees:** this means members on the board of an organisation who make important decisions.

**Executive:** this means the person or people at the top of the organisation. They make big decisions.



- Organisations that are not registered charities. Or, organisations that do not have an **asset lock**.

**Asset:** this means anything that your organisation owns that has a high money value. For example, cash, buildings or cars.

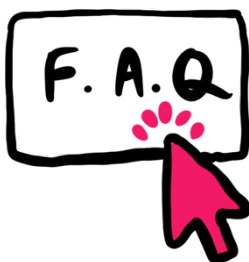
**Asset lock:** this means an agreement that funds must only be used to serve the communities that your organisation supports.



We can't fund organisations that don't have another way of making sure their assets are used for:

- Supporting their community
- Pushing for their activities
- Pushing for their **mission**

**Mission:** this is a document that sets out the purpose of an organisation and what goals they want to achieve.



You can go to our **Frequently Asked Questions** page: [FAQs](#)

You can find more information here about the [types of organisations we support](#).



## We also can't fund:

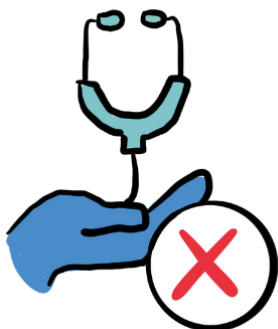


- Work that is not seen as charity work by law
- Work that does not benefit people in the UK in a direct way
- Grants to individual people
- **Capital costs**

**Capital costs:** this is a one-time payment to cover things such as building work, renovations, and equipment.

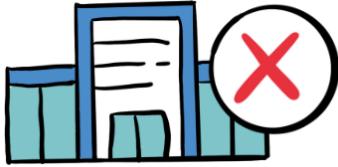


- Academic research. This is unless you can show the research will lead to practical outcomes.



- Healthcare which has a clinical base. This includes:
  - Medical research
  - Hospices
  - Counselling and therapy
  - Arts therapy
  - Education about and treatment for drug and alcohol misuse

## PUBLIC SERVICES



- We can't fund work that is carried out by authorities who use public funds. By law, they use public funds to run services.

For example, social services for children and older people.



### We also can't fund:

- Independent education
- Organisations that push for a religion

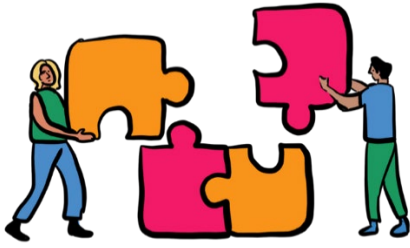
## What we think about when making decisions



**We look at these things when making decisions about your application:**



- **Track record** - We look at what you have done well. But we also look at what you learnt when things didn't go to plan.



- **Connections** - How could your work link to other work we support? How could it add to the work we already support?

How could it help make a **combined impact**?

**Combined impact:** this means when the work of two or more groups makes a bigger difference or change.



- **Wider context** – Where does the work fit into the bigger picture?

What and who are the:

- Opportunities
- Barriers
- Allies, this means people who support your work
- Collaborators, this means people or organisations that you work with

What effect does the work aim to have? What does it want to do or change?



- The difference our support could make

What could our funding and support add to this work? How could the work add to our **impact goals**?

**Impact goal:** this means the difference we want to make through our funding.



**This is the end of Part 1. Please go to Part 2 now, to find out how to apply.**